

WHAT IS CARBONE BORÉAL?

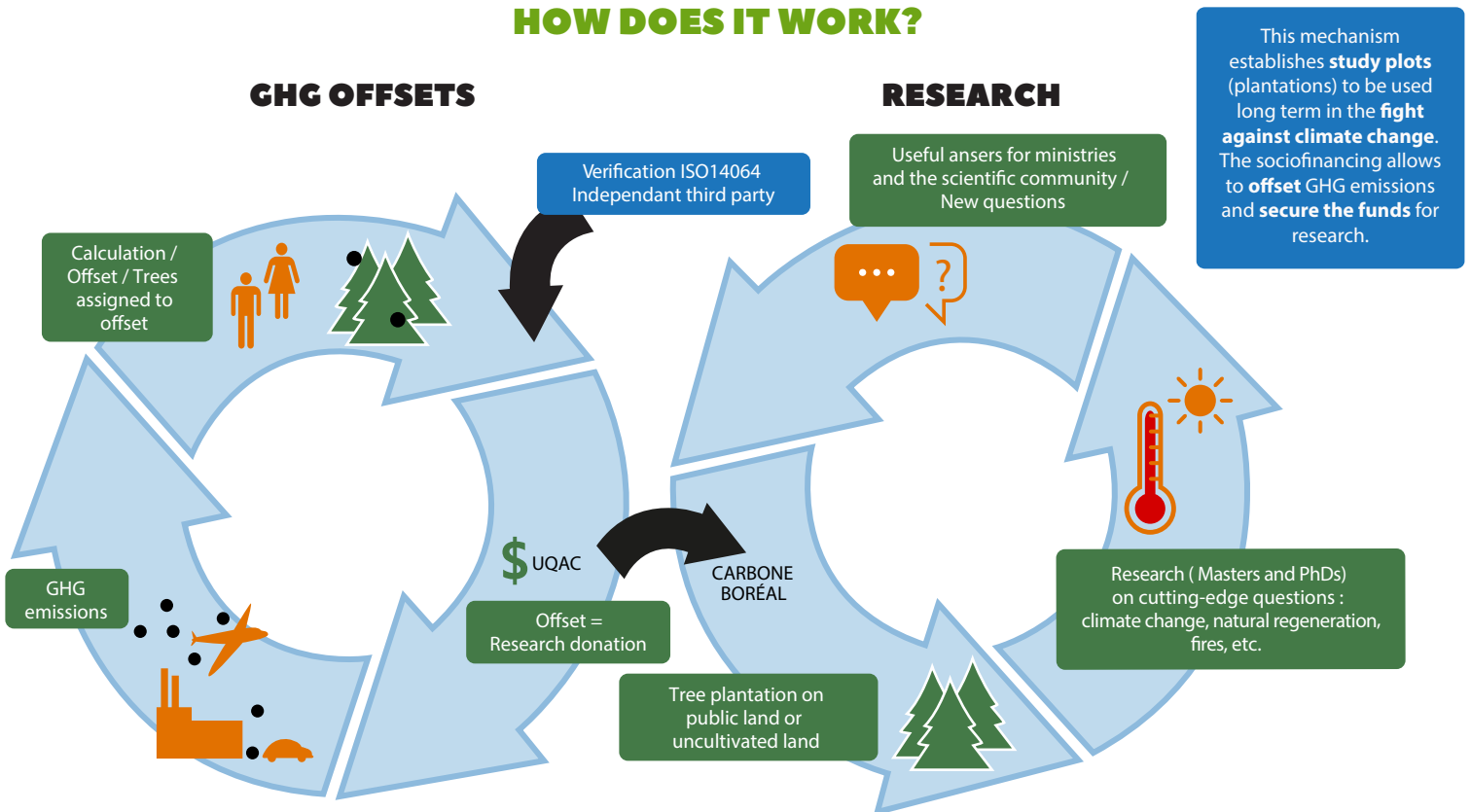
Carbone boréal is both a greenhouse gas (GHG) offset program, which plants trees, and a research infrastructure at UQAC

1 870 523
trees planted

157 726
tCO₂e offsets

* DATA OF FEBRUARY 2024

HOW DOES IT WORK?



WHY IS CARBONE BORÉAL RANKED FIRST AMONGST THE TREE PLANTING OPTIONS TO OFFSET EMISSIONS IN QUÉBEC?*

- 1 **Rigour and standardised methodology**
Carbone boréal follows standard ISO-14064-2
- 2 **Additionality**
Afforestation is not obligated and goes beyond normal activities / business as usual
- 3 **Permanence**
 - Our plantations are legally protected
 - 30 % are potential replacements if necessary (fires, insects, etc.)
 - As a university research infrastructure Carbone boréal is sustainable and long-term
 - 20 % of the money received is capitalised to insure financial viability over time
- 4 **Verification**
Our plantations, calculation methods, registry, etc., are routinely audited according to standard ISO-14064-3 by the Bureau de normalisation du Québec, an independent third party
- 5 **Registry**
GHG offsets are serialised and evidently, the corresponding trees can only be assigned once
- 6 **Transparency**
The registry, auditors' reports and the likes are disclosed on our website: carboneboreal.uqac.ca
- 7 **Use of funds and accountability**
 - Carbone boréal is non-profit, 100% of the funds are used for research, to maintain the plantations and sustain operations
 - Ultimately, the research infrastructure is under the Université du Québec à Chicoutimi governance and follows its administrative standards

*Protégés-vous magazine May 2020
*Qualified by the Assemblée nationale du Québec

